

NorthWesternTM Energy

Weatherizing Your Home

Do-It-Yourself Demonstration



1. *Install a door sweep.*

- **A door sweep seals the gap between the floorboard and the bottom of the door to keep cold air from entering the home.**
- **Materials needed**
 - **Cutters (tin snips)**
 - **Electric drill**
 - **Screwdriver**
 - **Measuring tape**
 - **Marker/pencil to mark measurements**



1. *Install a door sweep.*

- **Measure the door.**



1. *Install a door sweep.*

- **Match the middle of the sweep to the middle of the door.**



1. *Install a door sweep.*

- **Trim off the excess sweep with the tin snips.**



1. *Install a door sweep.*

- **Pre-drill holes so you can adjust the sweep before tightening the screws.**
- **Loosely place the screws through the holes in the door sweep and into the pre-drilled holes.**



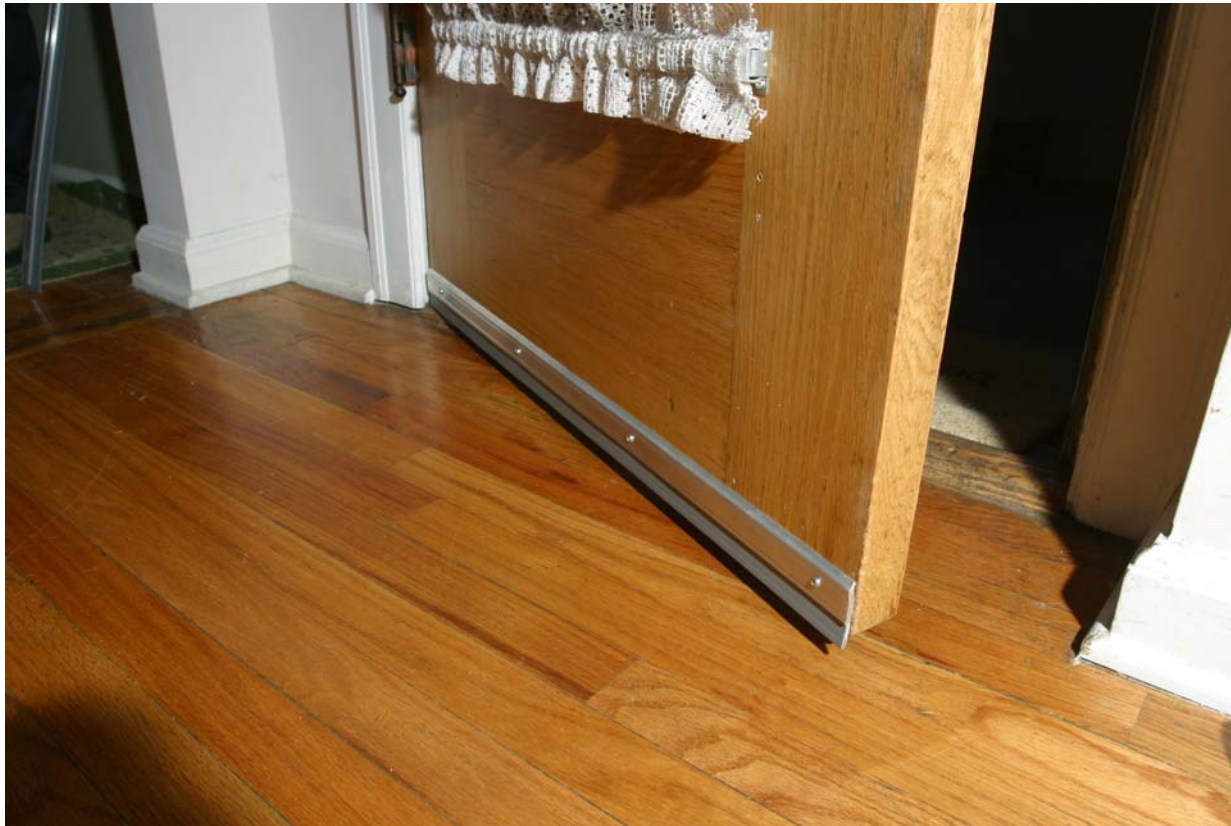
1. *Install a door sweep.*

- **Once in place, tighten the screws with the screwdriver.**



1. Install a door sweep.

- **The door sweep will prevent heat from escaping the home, and it will keep the cold air out.**



2. *Install foam gaskets.*

- **Use foam gaskets to cover the holes behind an outlet cover or light switch. These areas are often overlooked as places where cold air can sneak into a home.**
- **Materials needed:**
 - **Screwdriver**



3. Use spray foam.

- **Shoot foam into sill plates or any area where air could be leaking into the home.**
- **Take the nozzle and spray into the area, working quickly as the foam expands.**



4. *Install a window insulator kit.*

- **A window insulator kit stops cold drafts and reduces heat loss. Before installing the kit, be sure to clean the window.**
- **Materials needed:**
 - Scissors, or knife to cut/trim plastic
 - Hair dryer



4. *Install a window insulator kit.*

- **Measure the window and cut the plastic to fit the window. Don't cut the plastic to the exact size of the window – leave a little extra trim.**



4. *Install a window insulator kit.*

- **Place the two-sided tape, included in the kit, along the inside of the window.**



4. Install a window insulator kit.

- **Working from the top, begin pressing the plastic against the tape. Wait approximately 20 minutes for the plastic to adhere securely to the tape.**



4. Install a window insulator kit.

- **Use a hair dryer to tighten the plastic around the window.**



4. *Install a window insulator kit.*

- **Trim the edges off the plastic.**



Questions?

E-mail your questions to Ask Us