



# AFTER EVERY SNOW STORM, CLEAN AND CLEAR

Allowing snow and ice to build up on your natural gas meter, or fall from the roof above your meter, can lead to dangerous damages.

Your natural gas meter's regulator vent must always be clear so the flow of natural gas into the home can be regulated properly. If this vent becomes plugged, the pressure of gas flowing into the home could either increase to a dangerous level, resulting in a fire, explosion or the buildup of deadly carbon monoxide, or decrease, preventing natural gas from flowing to your gas appliances. Allowing a winter's worth of snow to pile up on a meter can lead to pipes breaking, causing dangerous gas leaks. Snow should also be cleared from the roof above the meter to prevent falling snow or ice from damaging

the meter or associated piping.

After major snow storms, take a walk around your property and ensure all vents are clear of snow or ice and that there is a path to your gas and electric meter in case we need to access them in an emergency.

Also, be sure all appliance exhaust vents are clear from blowing and drifting snow – especially after a winter storm. Blocked appliance vents could result in a loss of heat or a buildup of deadly carbon monoxide in the structure.

Just like scraping off your car or shoveling your sidewalks, it's important to take care of your natural gas meter after it snows. After every snow, be sure

to clear off your gas meter gently using your hands or a broom. Never use a shovel on the meter. If you rely on a snow removal company to clear your property, be sure they are also safely clearing snow and ice from your meter, and a path to your meter.

If you have a seasonal property or are away on vacation, ask someone to check your natural gas meter and vents, especially after a significant storm.

**NorthWestern<sup>®</sup>**  
**Energy**

*Delivering a Bright Future*

### **Watching for falling snow and ice**

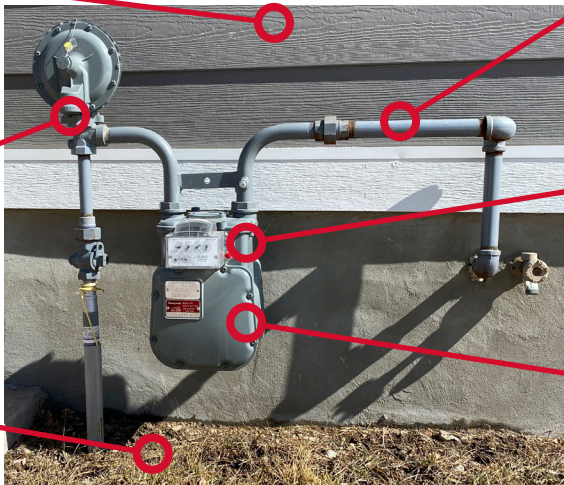
Snow should also be cleared from the roof above the meter to prevent falling snow or ice from damaging the meter or associated piping.

### **Keep your regulator vent clear of snow and ice**

Your natural gas meter's regulator vent must always be clear so the flow of natural gas into the home can be regulated properly.

### **Clear a path to your meter**

Be sure there is a path to your gas and electric meter in case we need to access them in an emergency.



### **Clear snow from all piping**

Heavy snow on piping can cause pipes to break leading to gas leaks.

### **Never use a shovel on the meter**

clear off your gas meter gently using your hands or a broom

### **Clear all snow from the meter**

Allowing a winter's worth of snow to pile up on a meter can lead to pipes breaking, causing dangerous gas leaks.