

**MISSOURI-MADISON RIVER FUND RECREATION PROJECT
GRANT APPLICATION FORM – FY2022**

Project Name: Missouri Headwaters Hazardous tree trimming

Reservoir or River Segment: Hebgen-Madison Range County(ies) Gallatin

Site Name (or project location): Missouri Headwaters Stata Park Picnic Ground

Applicant Name: Riley Bell

Position and Agency: Park Ranger- Montana Fish Wildlife and Parks- Missouri Headwaters State Park

Telephone: 406-285-3610

Email: Riley.bell@mt.gov

Project Sponsor Name: Dave Andrus

Position and Agency: Park Manager, Montana Fish Wildlife and Parks- Missouri Headwaters State Park

Telephone: 406-285-3610

Email: daveandrus@mt.gov

Project Cost Breakdown and Financial Request:

Complete the financial section below by providing total project cost (to the nearest dollar), contributions by applicant and cooperators, request for NorthWestern Energy match of agency funds (see detailed instruction), and River Fund Grant request. Document in-kind contributions by public agencies for determination of NorthWestern Energy match request. A description of funding sources and in-kind contributions should be included in the Project Description.

Total project cost: \$12,480

Applicant Contributions – cash \$1,720

Applicant Contributions – value of in-kind: 0

Other Contributions – Please list by source:

	\$	Percentage of Total Project Cost:
Total Applicant and Other Contributions:	<u>\$1,720</u>	<u>14%</u>
NorthWestern Energy Match Request:	<u>\$430</u>	<u>3%</u>
River Fund Grant Request:	<u>\$10,330</u>	<u>83%</u>
Proposed Project Implementation Period:	<u>Spring-Summer 2022</u>	

**MISSOURI-MADISON RIVER FUND RECREATION PROJECT
GRANT APPLICATION FORM – FY2022**

1. Has this project been previously submitted for funding consideration by the River Fund Board, either as a separate project or part of another project? Yes No

If yes, please identify which years the application was submitted and, if the project was previously funded, list the amount funded by year.

2. Is the proposed project at one of the Project 2188 license sites identified in the Missouri-Madison MOU and listed on page A2-2 of the Comprehensive Recreation Plan? Yes No

3. **Project Description:** Provide a description of the proposed project. Be sure to include specific project elements that are planned, and any associated cost detail.

- ▶ The Missouri Headwaters State Park is a National Historic Landmark featuring a number of different historic, natural, and recreational sites. The Missouri Headwaters State Park was a site used by many indigenous populations, trappers, and settlers. There is a pictograph along the Missouri River, indicating one visual instance of indigenous use. The park also holds remnants of the early settlement of Gallatin City which became the first county seat of Gallatin County and held the first flour mill in Montana. The Missouri Headwaters is also referenced during Lewis and Clark's expedition of 1804-06, as well as holding extensive local history and importance. The park is an important birding area, as it is home to many bird species. It provides habitat for a variety of different wild animals such as moose, marmots, and the occasional bobcat. The Missouri Headwaters State Park provides a wide range of recreational use including hiking, biking, camping, and river recreation such as floating, swimming, and fishing.

When the park was first created, trees were planted to provide shade to people to enjoy the areas, especially near the Gallatin River in the picnic area. As time goes on, trees are losing tree branches and providing less shade to the public and producing a hazardous environment as people sit and enjoy the views as dead branches hang above them.

The scope of this project would allow the park to hire a tree trimming company to come to the park and trim all the hazardous tree branches. The park had a company out here in previous years and the budget only allows it to do two or three trees a year. This grant would also allow the park to protect the public more when they come to visit and enjoy the area.

Funding Sources: The applicant cash contributions include \$1,000 that will be paid toward the contractor costs for this work, an estimated \$480 in FWP staff time and \$240 paid for grass seed.

4. **Cultural Resource Management:** Cultural Resource Management (CRM) requirements for any activity related to this Project must be completed and documented to NorthWestern Energy as a condition of awarded River Fund grant funds or NorthWestern Energy matching funds. Grant and matching funds may not be used for any land-disturbing activity, or the modification, renovation, or removal of any buildings or structures until the CRM consultation process has been completed. Agency applicants must submit a copy of the proposed project to a designated Cultural Resource Specialist for their agency. Private parties or non-governmental organizations are encouraged to submit a copy of their proposed project to a CRM consultant they may have employed. Private parties and non-governmental organizations may also contact the NorthWestern Energy representative for further information or assistance. Applications submitted without this section completed will be held without any action until the information has been submitted.

Summarize how you will complete requirements for Cultural Resource Management.

- ▶ A copy of the proposed project will be submitted to the Montana State Parks Cultural Resource Specialist, Rachel Reckin, P.H.D. Racheal Reckin P.H.D, will review and recommend any actions to conform with any cultural resource requirements and she will also submit it through SHIPO if she deems fit.

5. **Scoring Criteria.** Respond to the following Scoring Criteria in no more than two (2) additional written pages. Put answers in the cell after ▶.

5.1 Project is for operation and maintenance of an existing recreation site or an existing Project 2188 license site. Describe how the project would support O&M needs at an existing recreation site that are over and above day-to-day site maintenance. Needs may include measures to open a site for public use as well as minor repair; facility upgrade, reconstruction, and replacement; and major site rehabilitation.

- ▶ This proposed project will provide public safety by removing hazardous tree branches at the picnic area where people enjoy the view, school groups gather for field trips, and have special use events, weddings and reunions. Recently, the park hosted a race that started and ended at the picnic area that had 500 plus people in attendance. During the event, park staff was looking up as high winds came through the area. Luckily only a few branches fell and didn't hit anyone. These tree branches are too high for park staff to safely remove themselves and requires special equipment that comes with hiring a tree trimming company. This proposed project will also save staff time and resources after inclement weather comes through the park and breaks off the branches that should be removed. Along with all the equipment use and ground disturbance, we will also have to plant grass seed and do minimal ground work to get the areas back to the same condition they were in before the project took place.

5.2 Project involves collaboration with other agencies or organizations. Identify project partners other than NorthWestern Energy or River Fund, if any, and describe their participation. Document all funding sources and all in-kind support and services to a project, because all are sources of partnerships and in-kind contributions from public agencies qualify for calculation of NorthWestern Energy matching funds. If there are no project partners, explain why.

- ▶ Primary Partners and collaborators in this project include:

Park Staff: Will go through the picnic area after the tree trimming is finished and reseed and rake the ground to get it back to the condition it was in before. Park will buy the grass seed.

Tree Trimming Company: The company would be solely responsible for the tree trimming and cleaning of the area after they are finished trimming the trees.

5.3 Project provides a benefit to public recreation in the Project Area and addresses specific issues and goals of the Missouri-Madison Comprehensive Recreation Plan (CRP). Identify how the project provides a benefit to public recreation. Describe how specific issues and goals in Chapter 2-1 of the CRP would be supported.

- ▶ This project will protect public areas from hazardous conditions from falling dead or diseased tree branches as they enjoy the picnic ground area. It would also increase more shade as we plant new trees.

This project addresses several issues and goals in the Comprehensive Recreation Plan, including:

Protection of the natural resource – water quality, fisheries, wildlife, habitats, and cultural resources, in addition to recreation – is paramount in the continued support of a recreation system. With this project the park will be able to protect the above by improving the health of the trees that are currently there which will help with water quality in the Gallatin and Missouri rivers by slowing the rater of surface runoff, root growth and leaf litter improve the soil conditions which helps

with the infiltration of rain fall. By improving water quality in the river it has a potential to help the fish population in both rivers. By trimming the dead and diseased branches, it will create improved habitat for passerine birds, which will bring members of the public to come in and bird watch.

Interaction of recreationists with the natural environment has implications related to public safety and responsible outdoor behavior, as well as universal accessibility, human health factors, and resource protections concerns. If the park gets awarded this grant it will help the recreationists enjoy the park and the surroundings more as it will eliminate hazardous tree branches. Instead of the public's eyes being drawn to a bunch of dead branches in the trees, it will draw they eyes to the natural beauty of the cliffs in the surrounding areas, birds flying around in the trees, rivers flowing by, and just the overall beauty the park has to offer and just relax. As members of the public come out and enjoy they park, some have brought hammocks out and stretched them between trees in the picnic grounds to listen to the sounds of nature surround them but as they lay they and look up, they see dead branches and it could scare some people off and damper their mood and the health of the body.

Budgetary concerns are directly linked to NorthWestern Energy and state and federal land managers' abilities to cover costs associated with basic operations and maintenance at developed recreation sites within the Project Area. The park has not been able to keep up with the amount of dead and diseased branches in the picnic area as the trees are too tall for the park to reach with the equipment we currently have. The park has hired tree trimming crews in the past to come in and trim the trees for us, but the park is limited by budgets to do all the trees that need work and is slowly falling behind. With this grant, the park will be able to trim all the trees that need it and will allow the park to keep up in the future of trimming the trees.

5.4 Project responds to a clearly identified need. Describe and document the need for this project and how the project would address that need. Cite specific sources, as possible, to establish need and support the project. Discuss consequences if the funding request is unsuccessful. For a new construction or acquisition project, identify how post-project, long-term costs (such as site maintenance and management) will be provided.

- ▶ The Missouri Headwaters State Park is a well visited park, with many visitors stopping by the picnic area to enjoy lunch, fish, have special events (weddings, reunions), school field trip tours, and just to enjoy being in the great outdoors. This project will support the park purpose to provide access to the recreational opportunities as well as to ensure the safety of all visitors as they come to the park. This project will become a routine maintenance task as we hope to stay ahead of the tree trimming in the future so it doesn't require drastic action again in the future. The continuation and maintenance of the project area will be delegated as part of the duties of the maintenance team with assistance of the park ranger.

Without the funding requested, there is a potential that the park will not be able to trim all the trees that need to be trimmed in a timely manner and a branch could fall during a high wind event and land on and damage park infrastructure, or worse, injury a park visitor.

5.5 Project design options have been considered, estimated, and a preferred design selected. Well-designed projects reduce occurrences of budgetary overages, design changes, and additional complications. Discuss the current design phase for this project and include cost estimates.

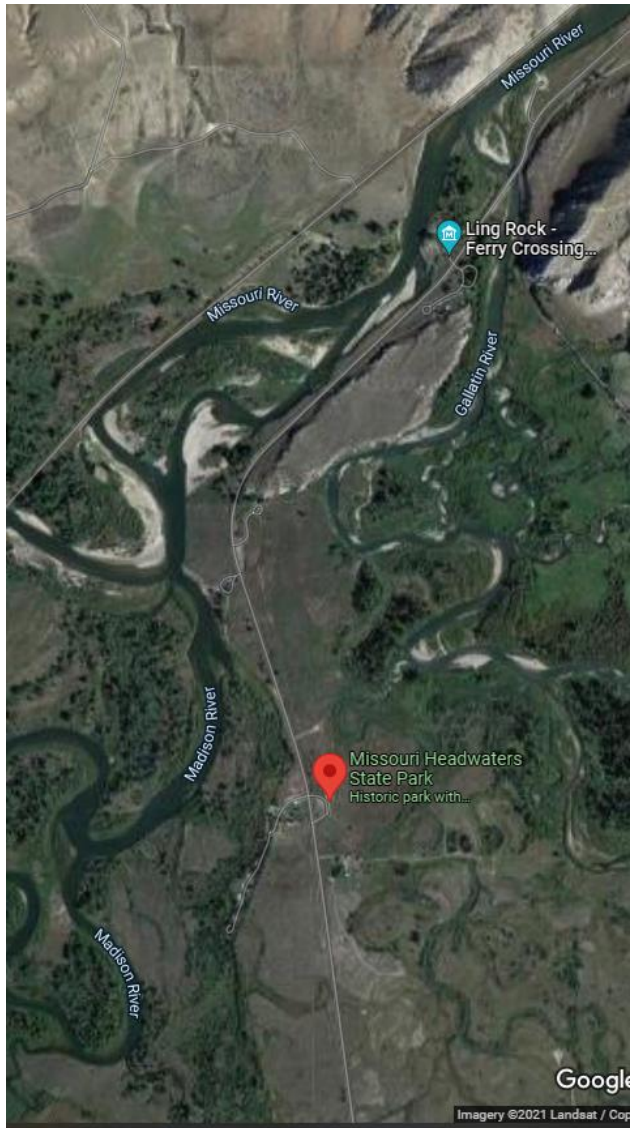
- ▶ The park has consulted with a tree trimming company with years of experience to help plan the best course of action to trim the trees to help reduce future issues but still provide plenty of shade for people to enjoy the area.
The park is in the process of creating a master plan for the park. The park would like to plant trees to help increase shade and to get a start on new trees before the current ones are dead. But we are waiting to see what the master plan brings and plant more trees in the future after we know where future infrastructure might go.

5.6 Project supports or protects other resources and is consistent with or supports resource plans in the Project Area. In addition to project-related benefits under #3 above, describe how this project will protect resource values (such as public access, water quality, fisheries, wildlife, habitats, and cultural resources) and support other resource plans, including Project 2188 License plans and land use and land management plans in place in the Corridor.

- ▶ This project will protect the public from hazardous tree branches from falling without any notice and injuring them. It will also help improve the soil quality helping grasses and other native plants grow in an otherwise harsh landscape and increase the overall health of the trees as they are not trying to send nutrients to a dead or diseased branch. It will provide more shade for people on those hot summers days we get in Montana along with providing habitat for other animals and birds to live in. The park is recognized as an important birding habitat. And with the increase of healthy trees, the park could see an increase in the number of birds that bring people to the park.

6. Insert map(s) showing the location of the proposed project, drawings and design work related to the project, and a reasonable number of photos (as available) here.

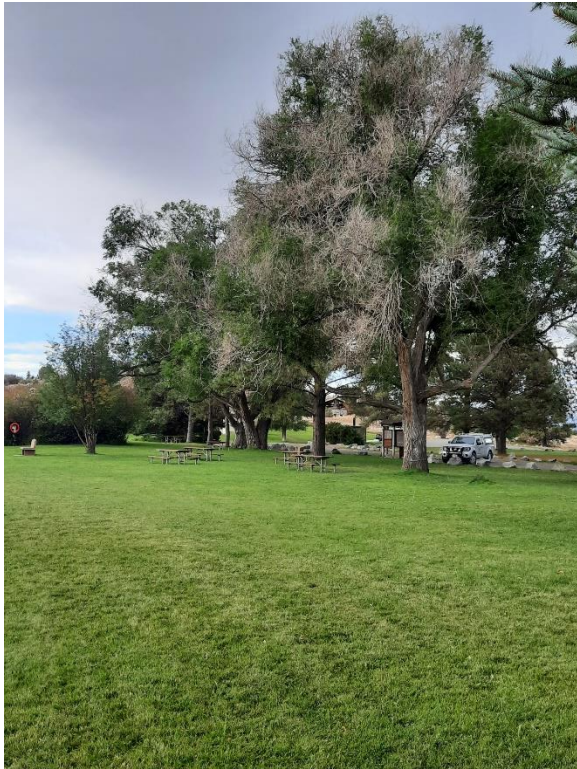
Item	Description	Cost	Hours
FWP Labor		\$ 480	
	Re-seed		
	Parking/road closure		
	Fix irrigation		
Grass Seed	Bushel-60 pounds	\$ 240	
Tree Trim Company	Hire crew to trim trees	\$ 11,760	3 days, 8-10 hour days
Project Total		\$ 12,480	



Aerial View of the whole Missouri Headwaters State Park with the project area in the upper right side, near the marker that says Ling Rock Ferry Crossing.



Aerial view of the project area, picnic area at Missouri Headwaters State Park



Picnic area with view of some of the hazardous tree branches



Example of a broken tree branch that come down during high winds



Hazardous tree branches in Headwaters picnic ground



Broken limbs that have fallen but gotten stuck on other branches

