

APPROVED

Hope Korbely

**MISSOURI-MADISON RIVER FUND RECREATION PROJECT
GRANT APPLICATION FORM – FY2022**

Project Name: Black Sandy bank stabilization/willow erosion control project

Reservoir or River Segment: Hauser Reservoir County(ies) Lewis and Clark

Site Name (or project location): Black Sandy State Park

Applicant Name: Craig Putchat

Position and Agency: Park Manager, Montana Fish, Wildlife, and Parks

Telephone: 406-495-3270

Email: cputchat@mt.gov

Project Sponsor Name: Craig Putchat

Position and Agency: Park Manager, Montana Fish, Wildlife, and Parks

Telephone: 406-495-3270

Email: cputchat@mt.gov

Project Cost Breakdown and Financial Request:

Complete the financial section below by providing total project cost (to the nearest dollar), contributions by applicant and cooperators, request for NorthWestern Energy match of agency funds (see detailed instruction), and River Fund Grant request. Document in-kind contributions by public agencies for determination of NorthWestern Energy match request. A description of funding sources and in-kind contributions should be included in the Project Description.

Total project cost:	<u>\$39,740</u>	
Applicant Contributions – cash	<u>\$8,440</u>	
Applicant Contributions – value of in-kind:	<u>0</u>	
Other Contributions – Please list by source:		
Consulting, Lewis & Clark Conservation district	<u>\$300(in kind)</u>	
	<u>\$</u>	
	<u>\$</u>	
	<u>\$</u>	Percentage of Total Project Cost:
Total Applicant and Other Contributions:	<u>\$8,740</u>	<u>22 %</u>
NorthWestern Energy Match Request:	<u>\$8,740</u>	<u>22 %</u>
River Fund Grant Request:	<u>\$22,260</u>	<u>56 %</u>
Proposed Project Implementation Period:	<u>Off season 2022 (Sept-April)</u>	

**MISSOURI-MADISON RIVER FUND RECREATION PROJECT
GRANT APPLICATION FORM – FY2022**

1. Has this project been previously submitted for funding consideration by the River Fund Board, either as a separate project or part of another project? Yes No

If yes, please identify which years the application was submitted and, if the project was previously funded, list the amount funded by year.

2. Is the proposed project at one of the Project 2188 license sites identified in the Missouri-Madison MOU and listed on page A2-2 of the Comprehensive Recreation Plan? Yes No

3. **Project Description:** Provide a description of the proposed project. Be sure to include specific project elements that are planned, and any associated cost detail.

- ▶ Bank Stabilization and erosion control project to mitigate problems at Black Sandy State Park. After reviewing several options to mitigate this ongoing problem, the most cost efficient, and effective method has been determined to be Willow Fascine with engineered lake access points interspersed. Fascine project will involve slope grading with erosion fabric and native grasses, and willow installation at water level. Access points will involve timber step construction filled with stone for human access to the lake.

Funding Sources: The applicant cash contributions include \$3,000 that will be paid toward the contractor costs for this work and an estimated \$5,440 in time from our Design & Construction (D&C) staff. Our D&C staff estimate their time costs based on the estimated construction cost of this project (\$34,000) at 13% for design work and 3% for contract administration.

The \$300 of in kind contributions is a value that was provided by the L&C CD for their time in consultation for this work.

4. **Cultural Resource Management:** Cultural Resource Management (CRM) requirements for any activity related to this Project must be completed and documented to NorthWestern Energy as a condition of awarded River Fund grant funds or NorthWestern Energy matching funds. Grant and matching funds may not be used for any land-disturbing activity, or the modification, renovation, or removal of any buildings or structures until the CRM consultation process has been completed. Agency applicants must submit a copy of the proposed project to a designated Cultural Resource Specialist for their agency. Private parties or non-governmental organizations are encouraged to submit a copy of their proposed project to a CRM consultant they may have employed. Private parties and non-governmental organizations may also contact the NorthWestern Energy representative for further information or assistance. Applications submitted without this section completed will be held without any action until the information has been submitted.

Summarize how you will complete requirements for Cultural Resource Management.

- ▶ *Montana State Parks Cultural Resources Manager will review the project and the site. Once the project has been reviewed by our staff, we will work with the State Historic Preservation Office for approval.*

5. **Scoring Criteria.** Respond to the following Scoring Criteria in no more than two (2) additional written pages. Put answers in the cell after ►.

5.1 *Project is for operation and maintenance of an existing recreation site or an existing Project 2188 license site.* Describe how the project would support O&M needs at an existing recreation site that are over and above day-to-day site maintenance. Needs may include measures to open a site for public use as well as minor repair; facility upgrade, reconstruction, and replacement; and major site rehabilitation.

- Erosion has been gnawing away at the usable space in the tent site area for many years. Summer of 2020 a large slide removed about 4' of usable land from the area. After discussing remediation options with FWP D&C, BLM, and L&C County Conservation District, the fascine idea was chosen. The only problem with this method is that a complete application would effectively eliminate water access in this area. To account for this, timber step access points have been engineered in at already used areas of the bank to accommodate the public.



5.2 *Project involves collaboration with other agencies or organizations.* Identify project partners other than NorthWestern Energy or River Fund, if any, and describe their participation. Document all funding sources and all in-kind support and services to a project, because all are sources of

partnerships and in-kind contributions from public agencies qualify for calculation of NorthWestern Energy matching funds. If there are no project partners, explain why.

- ▶ Expertise and advice from Lewis and Clark County Conservation District. Also, manpower, volunteers for willow cutting, bundling, and installation. L&C CO. Cons. Dist. has committed to helping with willow cutting, bundling, and hauling with volunteers.

Expertise and advice from BLM engineering staff who is doing a similar project at White Sandy.

Expertise, advice, surveying & engineering services, cost estimates and public bidding/bid evaluation from MTFWP Design and Construction division, & construction administration services will be provided. D&C will also assist in preparing permit applications to the Army Corp of Engineers (Nationwide permit verification) and an SPA 124 permit/318 authorization.

5.3 Project provides a benefit to public recreation in the Project Area and addresses specific issues and goals of the Missouri-Madison Comprehensive Recreation Plan (CRP). Identify how the project provides a benefit to public recreation. Describe how specific issues and goals in Chapter 2-1 of the CRP would be supported.

- ▶ Project provides a benefit thru addressing an ongoing problem that is removing recreation opportunity by erosion, while adding and preserving opportunity in a safer manner thru graded and manufactured step access to the lake.

5.4 Project responds to a clearly identified need. Describe and document the need for this project and how the project would address that need. Cite specific sources, as possible, to establish need and support the project. Discuss consequences if the funding request is unsuccessful. For a new construction or acquisition project, identify how post-project, long-term costs (such as site maintenance and management) will be provided.

- ▶ The need for this project has been there for many years and is becoming critical since the erosion has increased the past 2 years. Tent sites are literally losing surface area every year and getting smaller. If this project is not funded, we may be forced to close some tent sites if they become too small or hazardous for the public to use. This has not happened yet, but is anticipated if the remediation does not occur. There would be no foreseeable long term costs or extra maintenance associated with this project

5.5 Project design options have been considered, estimated, and a preferred design selected. Well-designed projects reduce occurrences of budgetary overages, design changes, and additional complications. Discuss the current design phase for this project and include cost estimates.

- ▶ Design and Construction looked at rip-rap, engineered concrete panels, and both were cost prohibitive. Upon consultation with BLM, who is having the same problem, several onsite meetings were held with FWP, BLM, and L&C County Cons. Dist, who has expertise and much experience with willow facine projects. The cost/benefit ratio was well within the do-able range with the willow That is why it was chosen. Design and Construction came up with the cost estimate with help from L&C Co Cons. Dist.

5.6 Project supports or protects other resources and is consistent with or supports resource plans in the Project Area. In addition to project-related benefits under #3 above, describe how this project will protect resource values (such as public access, water quality, fisheries, wildlife, habitats, and cultural resources) and support other resource plans, including Project 2188 License plans and land use and land management plans in place in the Corridor.

- ▶ Protects lakeshore from erosion, reduces siltation from wave action, thereby increasing water quality. Submerged willows in shallow water make great fish fry sanctuary to bolster natural fish reproduction.

6. Insert map(s) showing the location of the proposed project, drawings and design work related to the project, and a reasonable number of photos (as available) here.



Site
plan_aerial_draft.pdf



Site plan draft.pdf



Detail sht II
draft.pdf



Detail sht I
draft.pdf

7. Permitting and Planning Acknowledgement:

By submitting this application, and with an award of grant funds, applicant agrees that all permitting and planning requirements, such as NEPA and MEPA and cultural resource compliance, will be completed *prior to expenditure of awarded funds*. Furthermore, all design, layout, and contractual requirements will be completed in a timely manner.

Please refer to information and logos provided for acknowledgements and signage related to River Fund grants and NorthWestern Energy matching funds, which can be requested from Kim Bergstrom.

NOTES:
 1. SUPPLY COMPUTED BY MONTANA FISH, WILDLIFE AND PARKS - DESIGN & CONSTRUCTION ON JUNE 20, 2020.
 2. ANY UTILITIES DETECTED ON THESE PLANS ARE IN ACCORDANCE WITH THEIR ASSIGNED LIABILITY LEVELS AS DEFINED IN THE JURISDICTIONAL POLICY OF CIVIL ENGINEERING DOCUMENT ASCE 30. STANDARDS FOR THE COLLECTION AND INTERPRETATION OF EXISTING SUBSURFACE UTILITY DATA. BEFORE DIGGING, CALL 811 FOR LOCATION OF EXISTING UTILITIES.
 3. OFFSITE SUPPORT MATERIAL REQUIRED TO COMPLETE EROSION CONTROL SHALL BE CLEAN MATERIAL, WITHOUT EXCESSIVE CLAY OR FINES, SUITABLE FOR STRUCTURAL FILL MATERIAL AND FREE OF DELETERIOUS MATERIALS.



P. Jarama	7/22/21		
DRAWN BY: DATE	REVIEWED BY: DATE	APPROVED BY: DATE	
P. Jarama	7/22/21		
CHECKED BY: DATE	APPROVED BY: DATE	APPROVED BY: DATE	



Site Plan with Aerial background
 Black Sandy State Park - Bank Stabilization Project

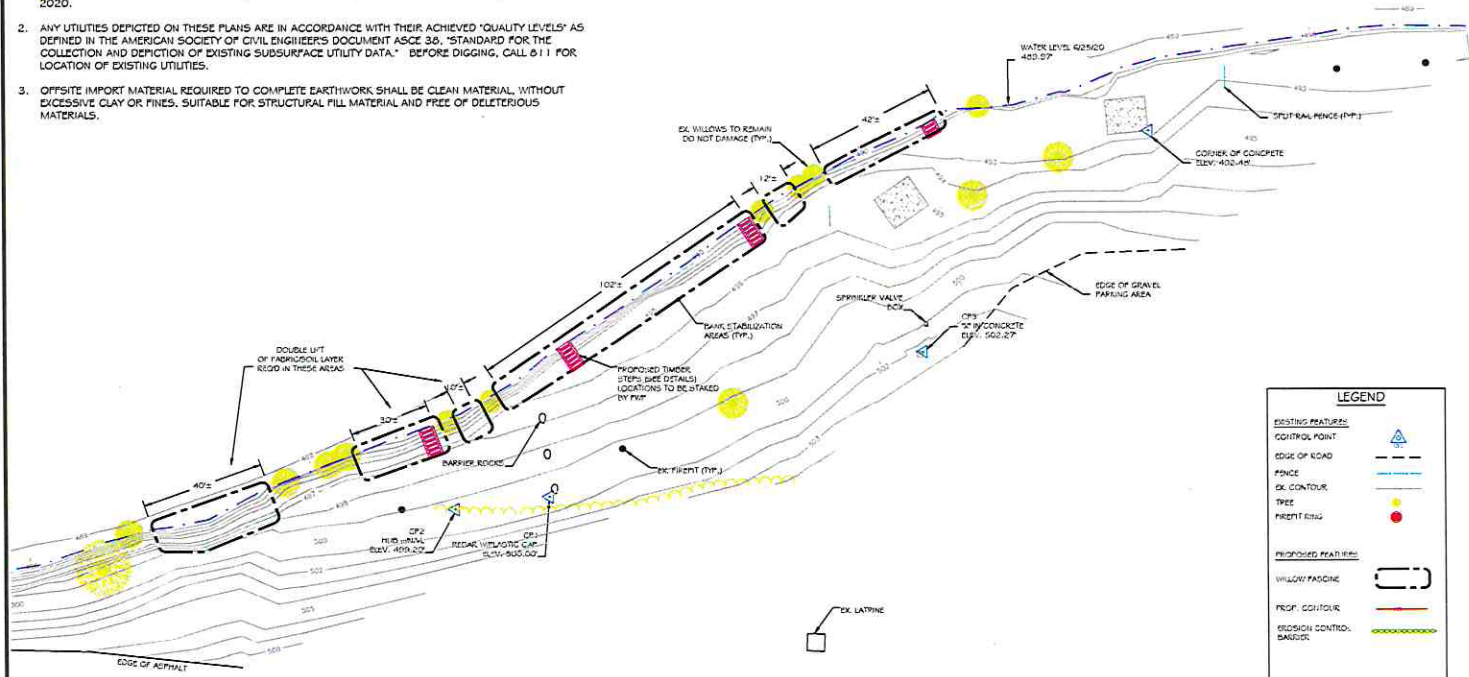


P. Jopoda	7/10/21				
DRAWN BY:	DATE:	REVISION BY:	DATE:	APPROVED BY:	DATE:
P. Jopoda	7/10/21				
CHECKED BY:	DATE:	APPROVED BY:	DATE:	APPROVED BY:	DATE:



Site Plan with Aerial background
Black Sandy State Park - Bank Stabilization Project

- NOTES:
1. SURVEY COMPLETED BY MONTANA FISH, WILDLIFE AND PARKS - DESIGN & CONSTRUCTION, ON JUNE 25, 2020.
 2. ANY UTILITIES DEPICTED ON THESE PLANS ARE IN ACCORDANCE WITH THEIR ACHIEVED "QUALITY LEVELS" AS DEFINED IN THE AMERICAN SOCIETY OF CIVIL ENGINEERS DOCUMENT ASCE 30, "STANDARD FOR THE COLLECTION AND DEPICTION OF EXISTING SUBSURFACE UTILITY DATA," BEFORE DIGGING, CALL 811 FOR LOCATION OF EXISTING UTILITIES.
 3. OFFSITE IMPORT MATERIAL REQUIRED TO COMPLETE EARTHWORK SHALL BE CLEAN MATERIAL, WITHOUT EXCESSIVE CLAY OR FINES, SUITABLE FOR STRUCTURAL FILL MATERIAL AND FREE OF DELETERIOUS MATERIALS.



LEGEND

EXISTING FEATURES:

- CONTROL POINT:
- EDGE OF ROAD:
- FENCE:
- EX. CONTOUR:
- TREE:
- PRESENT ELEV:

PROPOSED FEATURES:

- WILLOW FASCINE:
- PROP. EDGE/TOUR:
- EROSION CONTROL BARRIOR:

DRAFT
 For Internal
 review only
 Not for
 Construction
 or bidding



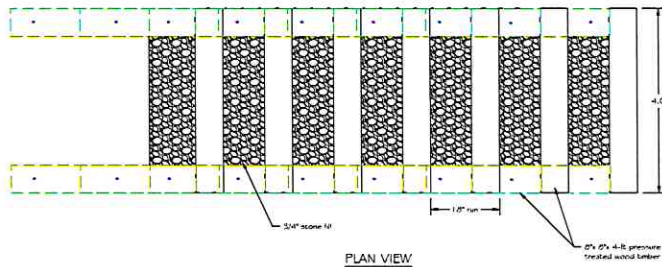
P. Janda	7/10/21				
DRAWN BY:	DATE:	REVIEWED BY:	DATE:	APPROVED BY:	DATE:
P. Janda	7/10/21				
CHECKED BY:	DATE:	APPROVED BY:	DATE:	APPROVED BY:	DATE:



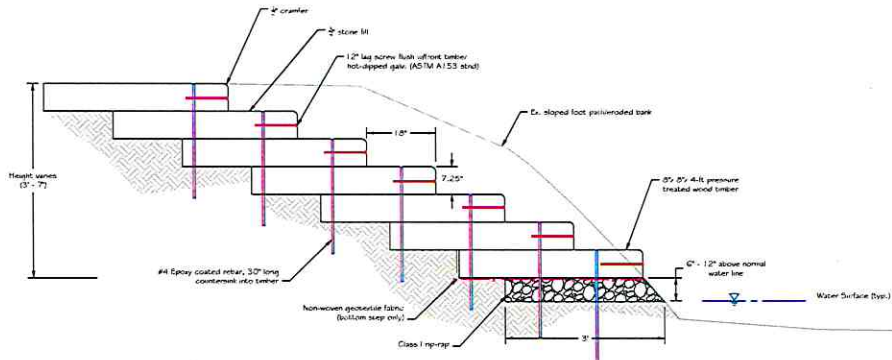
Site Plan
 Black Sandy State Park - Bank Stabilization Project



SHEET: 2 of ?



PLAN VIEW



TIMBER STEPS SECTION VIEW

Approx. Scale: 1/4"=1'

- Notes:
1. Access stairs will vary in height & number of rises depending on location.
 2. Rebar shall be coated with epoxy in accordance with ASTM A775 or approved equal.

DRAFT
For Internal
review only
Not for
Construction
or bidding

P. Agudo	7/27/21
DRAWN BY:	DATE:
P. Agudo	7/27/21
CHECKED BY:	DATE:

REVISION BY:	DATE:
APPROVED BY:	DATE:

APPROVED BY:	DATE:
APPROVED BY:	DATE:

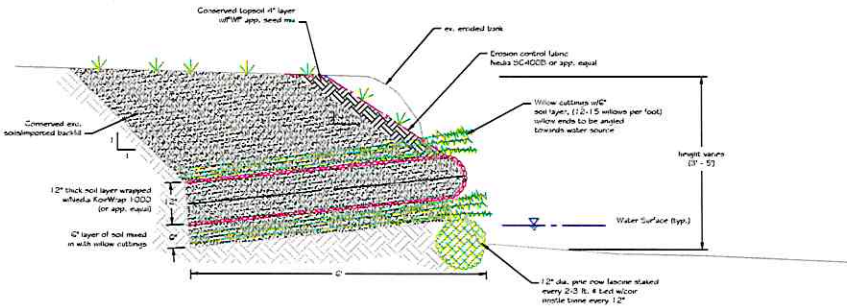


**MONTANA FISH,
WILDLIFE & PARKS**

Detail Sheet II
Black Sandy State Park - Bank Stabilization Project



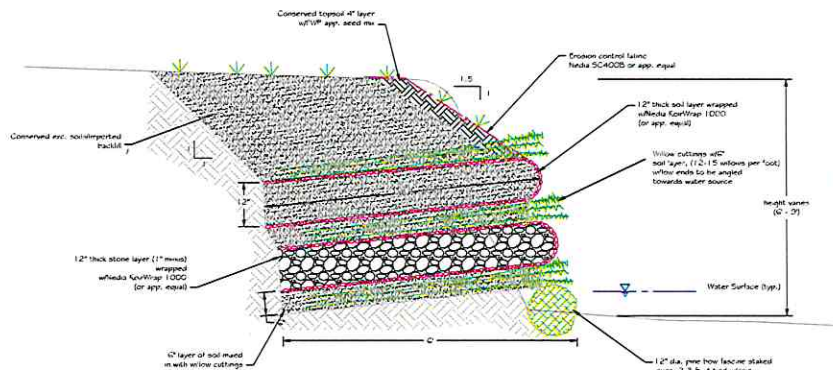
SHEET: 4
of ?



**WILLOW BANK STABILIZATION DETAIL
(SINGLE LIFT)**
Approx. Scale: 1"=2'

Notes:
1. This detail to be used for areas that are 5 ft. or less in height.
2. Willow stakes must be angled down towards water line and allowed to come into contact with water source.

NOTES:
1. WILLOW CUTTINGS SHALL BE PLACED BETWEEN THE SOIL BUNDLES SO THAT NO MORE THAN ONE-THIRD OF THE LENGTH OF THE CUTTINGS EXTENDS BEYOND THE FACE OF THE SUBSEQUENT BUNDLE TIER. WILLOW CUTTINGS SHALL BE PLACED AT A SPACING OF TWELVE (12) TO FIFTEEN (15) CUTTINGS PER FOOT.
2.



**WILLOW BANK STABILIZATION DETAIL
(DOUBLE LIFT)**
Approx. Scale: 1"=2'

Notes:
1. This detail to be used for areas that are 6 ft. or more in height.
2. Willow stakes must be angled down towards water line and allowed to come into contact with water source.

DRAFT
For Internal
review only
Not for
Construction
or bidding

DESIGNED BY: P. Jernia	DATE: 7/20/21	REVIEWED BY: DATE:	APPROVED BY: DATE:
CHECKED BY: P. Jernia	DATE: 7/20/21	APPROVED BY: DATE:	APPROVED BY: DATE:



Detail Sheet I
Black Sandy State Park - Bank Stabilization Project



SHEET: 3 of 2