

about...

NORTH WESTERN ENERGY



Providing a Valuable Service

“By national comparisons, NorthWestern is a relatively small utility. It is a regionally-focused, fully regulated, pure utility.”

- Bob Rowe, President and CEO

NorthWestern Energy is a “small cap” company serving approximately 650,000 customers in Montana, South Dakota and Nebraska. Compared nationally, NorthWestern is a relatively small utility that is entirely regulated.

NorthWestern is dedicated to providing safe, reliable electric and/or natural gas service to 349 communities.

This document summarizes the Company’s service in Montana. If you want to know more about NorthWesternEnergy, log-on to www.northwesternenergy.com. You can find the latest Company news, download reports, learn ways to make your home or business more energy efficient, sign up for services, and much more.

Montana Investment

Total Assets (company-wide)	\$2.8 billion
Montana Total Assets	\$1.9 billion
Total Capitalization (company-wide)	\$1.8 billion
Montana Capital Investment (2008)	\$97 million
Montana Non-Payroll Expenditures (2008)	\$110 million

Montana Employees

Montana Employees	1,035
Montana Payroll	\$80 million
Montana Employee Locations	53 communities
Union Employees	421
Union Contractors (used on major projects)	131
Estimated Number of Union Contractor FTEs	150
Estimated Union Contractor Payroll	\$14 million
Montana Retirees	1,200
Estimated Annual Montana Pension Payments	\$15 million

- ◆ Half of the executive team live in Montana, including the CEO
- ◆ Company operations center, network control center, customer call center and other key facilities are located in Butte

Montana Commitment

Montana Property Taxes (2008)	\$77 million
Charitable Contributions (2008)	More than \$1.1 million

- ◆ \$500,000 through local, employee-run committees
- ◆ \$500,000 to Montana fuel bill assistance, weatherization, and food banks
- ◆ Monthly employee-led charitable giving campaigns
- ◆ Employees are community leaders and volunteers throughout our region

Montana Operations Quick Facts

Electric Service

332,500 customers in 187 communities

7,000 miles of transmission lines

21,000 miles of distribution lines

30% ownership in Colstrip 4 is rate regulated and dedicated to serving our customers (meeting 25% of their electricity needs)

Best-in-region 8.5% of electricity from wind/renewable

Opportunity to ramp up cost-effective wind with Mill Creek Generating Station providing stability on our distribution network

Expanding electric and natural gas energy efficiency programs

Investment in critical infrastructure to keep Montana strong and help it grow

Natural Gas Service

179,200 customers in 105 communities

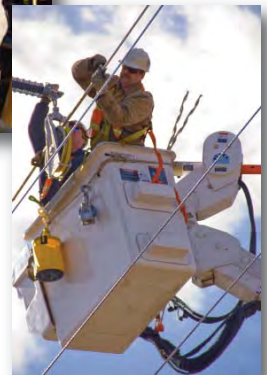
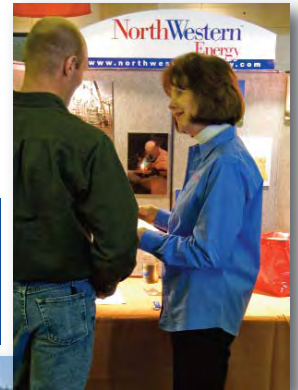
4,000 miles of distribution pipelines

2,000 miles of intrastate transmission pipelines

16.2 Bcf (billion cubic feet) of gas storage

Programs and Services

- ◆ Retail (service to end-use customers such as homes and businesses) electric and natural gas distribution, transmission and supply services.
 - Over half is rural with an average of only nine customers per mile.
- ◆ Wholesale (service to generators or suppliers for ultimate use by customers) electric and natural gas transmission services.
- ◆ Energy efficiency programs, rebates and incentives for energy efficiency, commercial energy appraisals and renewable activities through participation in the Universal System Benefits and E+ programs.
- ◆ Support to state and federal agencies and non-profits to provide energy assistance to low-income customers.
- ◆ Area lighting services.
- ◆ Extended customer services including online account access, pilot lighting program and appliance inspection program.
- ◆ Dedicated and responsible partners in business retention, business expansion and business creation through Economic Development resources.



NorthWestern
Energy

Delivering a Bright Future