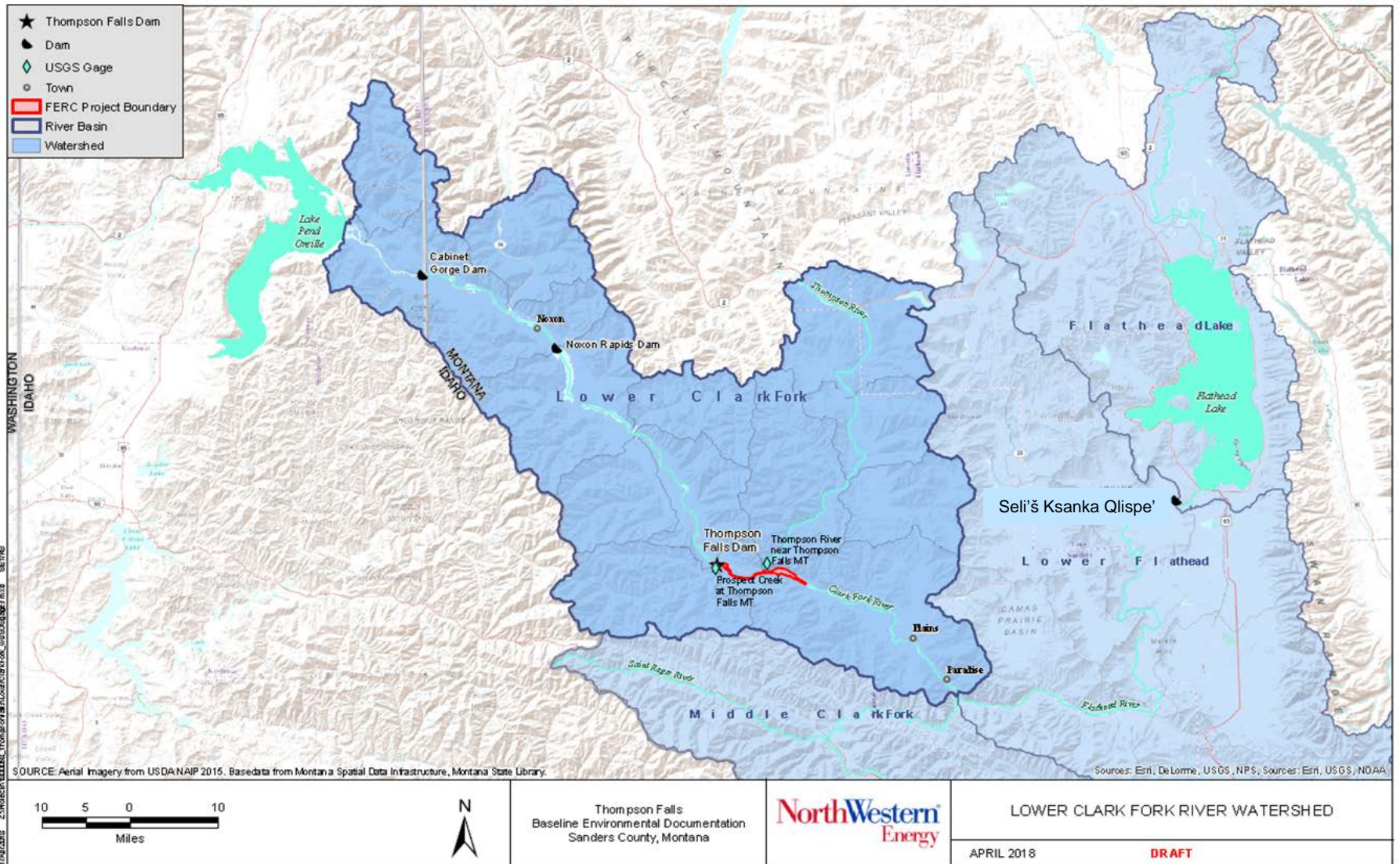




FERC Relicensing Meeting: September 12, 2018

**NorthWestern**<sup>®</sup>  
**Energy**  
*Delivering a Bright Future*

# Thompson Falls Hydroelectric Project



Thompson Falls  
 Baseline Environmental Documentation  
 Sanders County, Montana



LOWER CLARK FORK RIVER WATERSHED  
 APRIL 2018 DRAFT



# Project Features



- **1913-1915** original construction
- **1938** - Initial license
- **1979** – Current license
  - Amended in **1990** to allow the addition of a new powerhouse and generating unit
  - Amended in **2009** again for construction of the fish ladder
- **2025** License Expires

- Total Project Installed Generating Capacity is **92 MW**
  - Units 1-6: 39 MW
  - Unit 7: 53 MW
- Environmental stewardship program
  - Fish ladder
  - Protection, Mitigation & Enhancements for bull trout
  - Monitoring
  - Recreation enhancements



- Integrated Licensing Process requires a Pre-Application Document and Notice of Intent to Relicensing in 2020
- We are voluntarily initiating early discussion with stakeholders
- Baseline Environmental Document – a precursor to the PAD
  - Compiles existing data and information
  - Facilitates discussions to identify issues

***\*BED will be available on our website on Nov 1***

- <http://thompsonfallsfishpassage.com>

***\*Workshop to discuss the BED on Dec 4 - Missoula***